



上海万享冷却设备有限公司  
SHANGHAI WANXIANG COOLING EQUIPMENT CO.,LTD

**Shanghai Wanxiang Cooling Equipment Co., Ltd.**

Floor 4, No. 4727, Gonghexin Rd., Shanghai, China 200435

TEL: 86 021-56389411

FAX: 86 021-56382762

URL: <http://www.sh-sw1.com/>

MAIL: [market@sh-sw1.com](mailto:market@sh-sw1.com)



## **FKH/HL Open Cross-flow, Induced-draft Cooling Tower**

### Design Information





## I. Outline of models

(open type, cross flow, and induced draft)

Models	Cooling capacity	Fan system		Outline Size			Inlet	Outlet	Weight	
	(37-32-28 °C)	Power	Diameter	L	W	H			Shipping Weight	Operating Weight
	m <sup>3</sup> /h	KW	mm	mm	mm	mm			DN mm	DN mm
FKHL-821D	73	2.2	1600	2250	3792	2992	DN100×2	DN150×1	1550	3650
FKHL-821P	81	3	1600	2250	3792	2992	DN100×2	DN150×1	1660	3790
FKHL-821G	90	4	1600	2250	3792	2992	DN100×2	DN150×1	1710	3850
FKHL-822D	92	3	1800	2250	3792	3492	DN100×2	DN150×1	2050	4180
FKHL-822P	103	4	1800	2250	3792	3492	DN100×2	DN150×1	2150	4280
FKHL-822G	115	5.5	1800	2250	3792	3492	DN100×2	DN150×1	2180	4300
FKHL-832D	148	5.5	2000	2476	4792	3492	DN125×2	DN200×1	2600	5500
FKHL-832P	160	7.5	2000	2476	4792	3492	DN125×2	DN200×1	2680	5600
FKHL-832G	182	11	2000	2476	4792	3492	DN125×2	DN200×1	2700	5670
FKHL-842D	175	7.5	2200	2690	4792	3492	DN125×2	DN200×1	2830	6150
FKHL-842P	200	11	2200	2690	4792	3492	DN125×2	DN200×1	3000	6230
FKHL-842G	221	15	2200	2690	4792	3492	DN125×2	DN200×1	3230	6450
FKHL-852D	190	7.5	2400	2976	5220	3492	DN150×2	DN250×1	3380	7190
FKHL-852P	215	11	2400	2976	5220	3492	DN150×2	DN250×1	3530	7410
FKHL-852G	240	15	2400	2976	5220	3492	DN150×2	DN250×1	3750	7630
FKHL-854D	265	15	2600	2976	5220	5106	DN150×2	DN250×1	4150	8800
FKHL-854P	286	18.5	2600	2976	5220	5106	DN150×2	DN250×1	4180	8850
FKHL-854G	302	22	2600	2976	5220	5106	DN150×2	DN250×1	4360	9020
FKHL-873D	385	15	3100	3620	6396	4150	DN125×4	DN250×1	5120	9750



FKHL-873P	410	18.5	3100	3620	6396	4150	DN125×4	DN250×1	5150	9890
FKHL-873S	438	22	3100	3620	6396	4150	DN125×4	DN250×1	5280	10400
FKHL-873U	485	30	3100	3620	6396	4150	DN125×4	DN250×1	5360	10800
FKHL-873L	518	37	3100	3620	6396	4150	DN125×4	DN250×1	5410	11100
FKHL-873G	554	45	3100	3620	6396	4150	DN125×4	DN250×1	5450	11600
FKHL-874P	502	22	3100	3620	6396	5106	DN125×4	DN300×1	5980	12500
FKHL-874U	557	30	3100	3620	6396	5106	DN125×4	DN300×1	6100	12800
FKHL-874L	598	37	3100	3620	6396	5106	DN125×4	DN300×1	6190	13100
FKHL-874G	637	45	3100	3620	6396	5106	DN125×4	DN300×1	6340	13400
FKHL-875P	615	30	3100	3620	6396	6455	DN150×4	DN300×1	7010	14100
FKHL-875U	660	37	3100	3620	6396	6455	DN150×4	DN300×1	7080	14300
FKHL-875L	701	45	3100	3620	6396	6455	DN150×4	DN300×1	7130	15000
FKHL-875G	752	55	3100	3620	6396	6455	DN150×4	DN300×1	7250	15400
FKHL-893D	425	15	3900	4250	7316	4150	DN125×4	DN250×1	6790	14000
FKHL-893P	456	18.5	3900	4250	7316	4150	DN125×4	DN250×1	6820	14300
FKHL-893S	486	22	3900	4250	7316	4150	DN125×4	DN300×1	7100	14600
FKHL-893U	536	30	3900	4250	7316	4150	DN125×4	DN300×1	7240	15000
FKHL-893L	575	37	3900	4250	7316	4150	DN125×4	DN300×1	7360	15300
FKHL-893G	610	45	3900	4250	7316	4150	DN125×4	DN300×1	7510	15500
FKHL-894P	618	30	3900	4250	7316	5106	DN150×4	DN350×1	8630	17300
FKHL-894U	660	37	3900	4250	7316	5106	DN150×4	DN350×1	8770	17450
FKHL-894L	705	45	3900	4250	7316	5106	DN150×4	DN350×1	8850	18600
FKHL-894G	758	55	3900	4250	7316	5106	DN150×4	DN350×1	9010	17200
FKHL-895P	735	37	3900	4250	7316	6455	DN200×4	DN400×1	9830	19000
FKHL-895U	780	45	3900	4250	7316	6455	DN200×4	DN400×1	9970	19500
FKHL-895L	840	55	3900	4250	7316	6455	DN200×4	DN400×1	10100	20000
FKHL-895G	932	75	3900	4250	7316	6455	DN200×4	DN400×1	10300	20500



FKH-713D	49	2.2	1100	1850	2250	4150	DN100×1	DN100×1	1180	2350
FKH-713P	54	3	1100	1850	2250	4150	DN100×1	DN100×1	1230	2480
FKH-713G	60	4	1100	1850	2250	4150	DN100×1	DN100×1	1290	2540
FKH-723D	57	3	1200	1850	2610	4150	DN125×1	DN125×1	1410	2850
FKH-723P	63	4	1200	1850	2610	4150	DN125×1	DN125×1	1500	2950
FKH-723G	72	5.5	1200	1850	2610	4150	DN125×1	DN125×1	1590	3050
FKH-734D	69	4	1300	1850	2896	5106	DN150×1	DN150×1	1600	3100
FKH-734P	78	5.5	1300	1850	2896	5106	DN150×1	DN150×1	1700	3300
FKH-734G	87	7.5	1300	1850	2896	5106	DN150×1	DN150×1	1820	3450
FKH-744D	112	5.5	2000	2250	3540	5106	DN200×1	DN200×1	2050	4500
FKH-744P	125	7.5	2000	2250	3540	5106	DN200×1	DN200×1	2200	4600
FKH-744G	143	11	2000	2250	3540	5106	DN200×1	DN200×1	2420	4800

● Significance of the model names

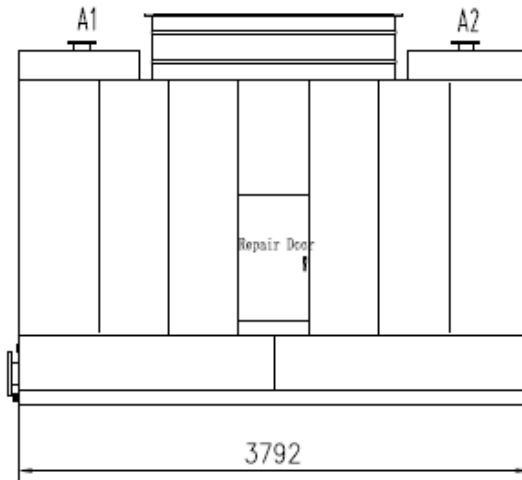
☆ For Shanghai Wanxiang:

F	K	H/HL	-	821	D
Induced Draft	Open type Cooling Tower	Cross flow		Model code	Noise Level

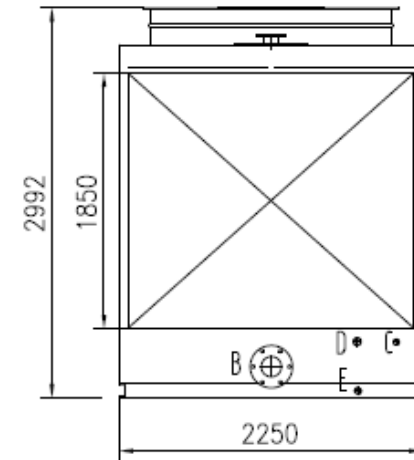


## II. Drawings:

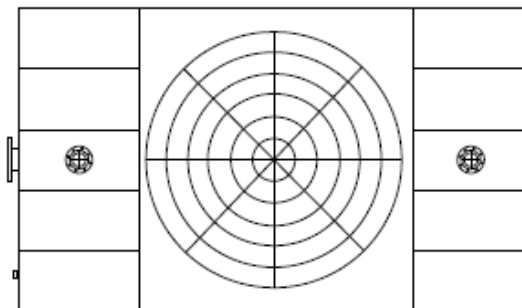
### 1) Model FKHL-821(D、P、G)



VIEW 2



VIEW 1

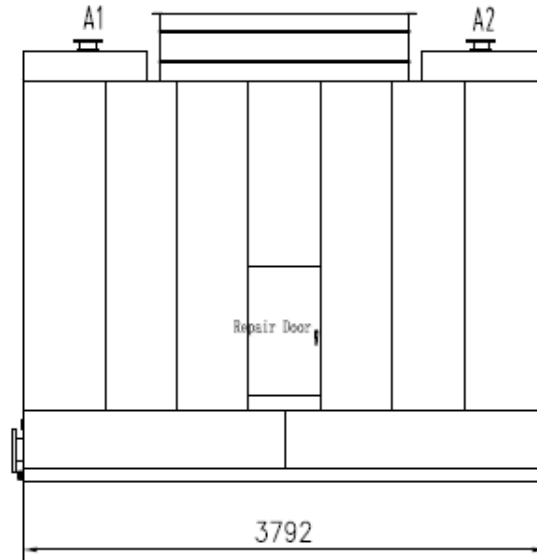


VIEW 3

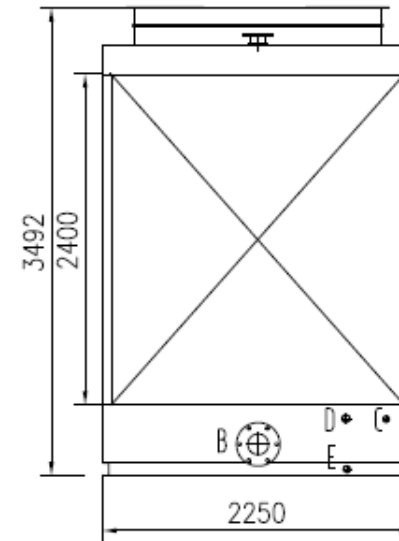
pipe table				
Symbol	Size	standard	seal type	used for
A1	DN100	HG20593,20599	RF	Inlet water
A2	DN100	HG20593,20599	RF	Inlet water
B	DN150	HG20593,20599	RF	Out water
C	DN25	G1'(G pipe thread)	G pipe	water pick up
D	DN50	G2'(G pipe thread)	G pipe	over flow
E	DN50	G2'(G pipe thread)	G pipe	sewage



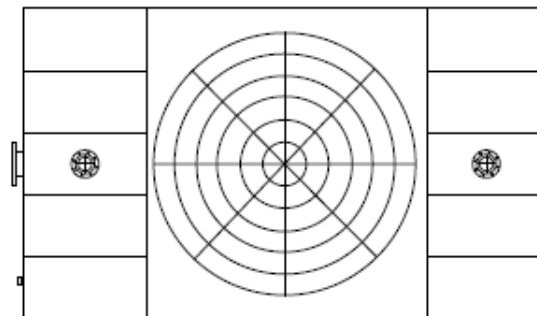
2) Model FKHL-822(D、P、G)



VIEW 2



VIEW 1

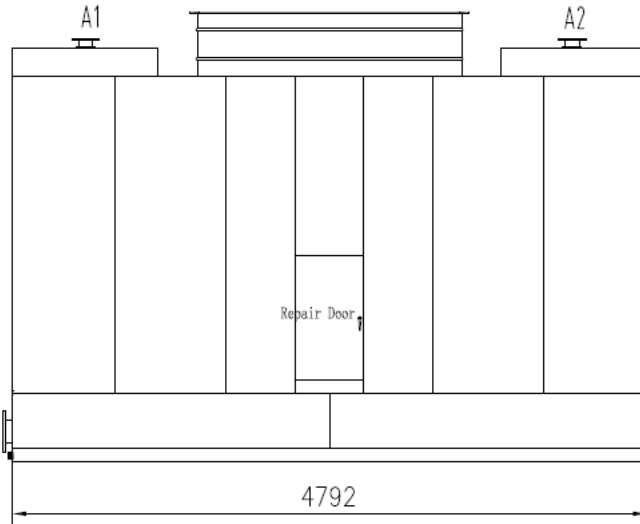


VIEW 3

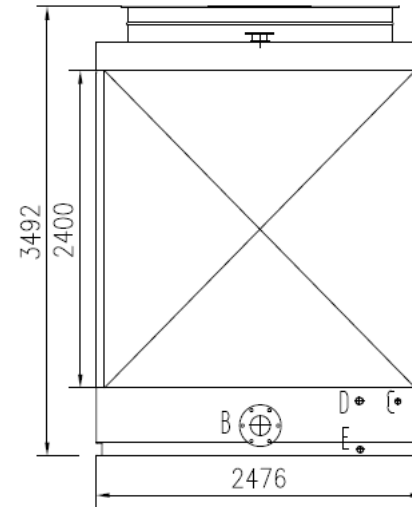
pipe table				
Symbol	Size	standard	seal type	used for
A1	DN100	HG20593,20599	RF	Inlet water
A2	DN100	HG20593,20599	RF	Inlet water
B	DN150	HG20593,20599	RF	Out water
C	DN25	G1'(G pipe thread)	G pipe	water pick up
D	DN50	G2'(G pipe thread)	G pipe	over flow
E	DN50	G2'(G pipe thread)	b pipe	sewage



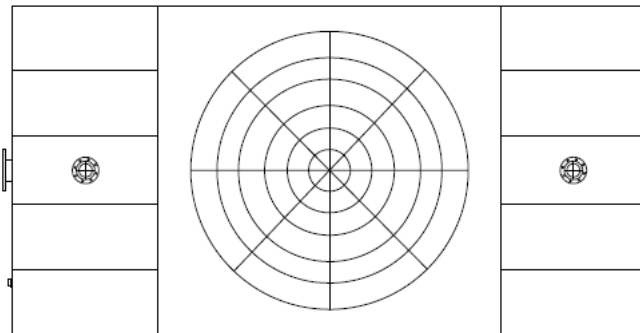
3) Model FKHL-832(D、P、G)



VIEW 2



VIEW 1

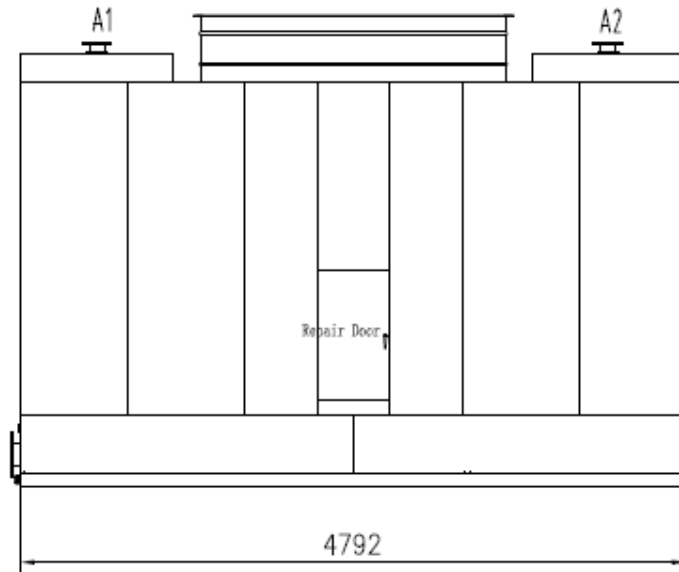


VIEW 3

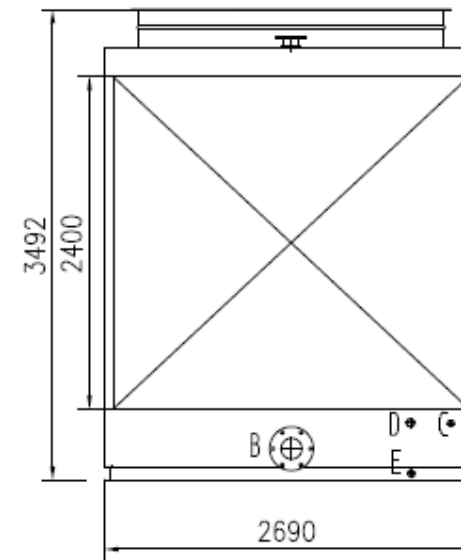
pipe table				
Symbol	Size	standard	seal type	used for
A1	DN125	HG20593,20599	RF	Inlet water
A2	DN125	HG20593,20599	RF	Inlet water
B	DN200	HG20593,20599	RF	Out water
C	DN25	G1'(G pipe thread)	G pipe	water pick up
D	DN50	G2'(G pipe thread)	G pipe	over flow
E	DN50	G2'(G pipe thread)	G pipe	sewage



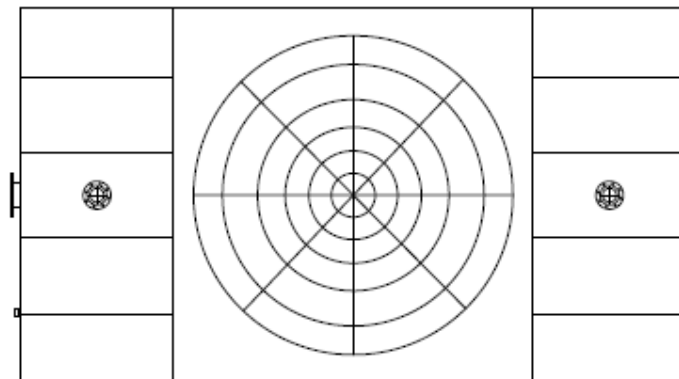
4) Model FKHL-842(D、P、G)



VIEW 2



VIEW 1



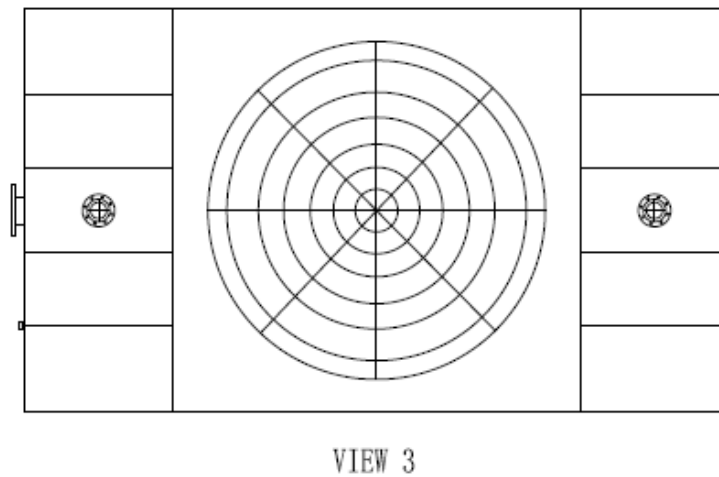
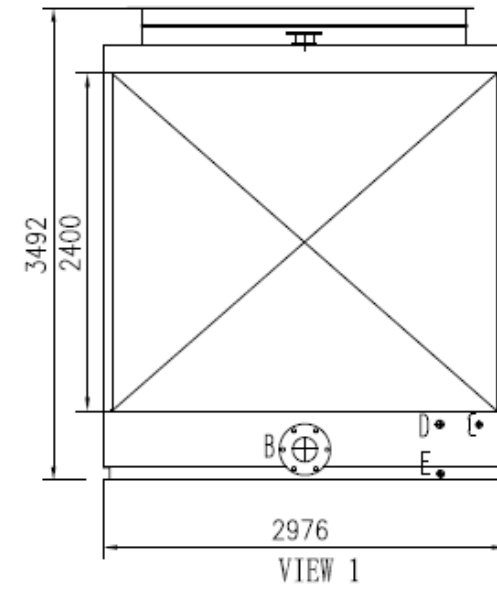
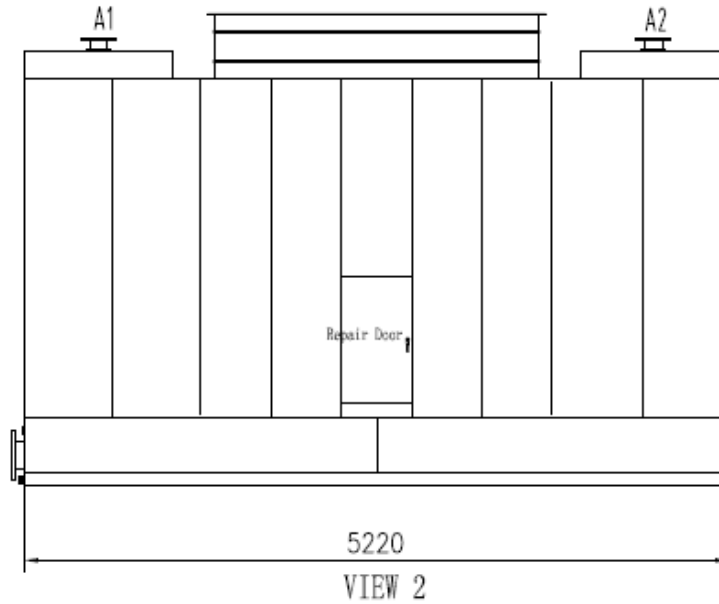
VIEW 3

pipe table				
Symbol	Size	standard	seal type	used for
A1	DN125	HG20593,20599	RF	Inlet water
A2	DN125	HG20593,20599	RF	Inlet water
B	DN200	HG20593,20599	RF	Out water
C	DN25	G1'(G pipe thread)	G pipe	water pick up
D	DN50	G2'(G pipe thread)	G pipe	over flow
E	DN50	G2'(G pipe thread)	G pipe	sewage





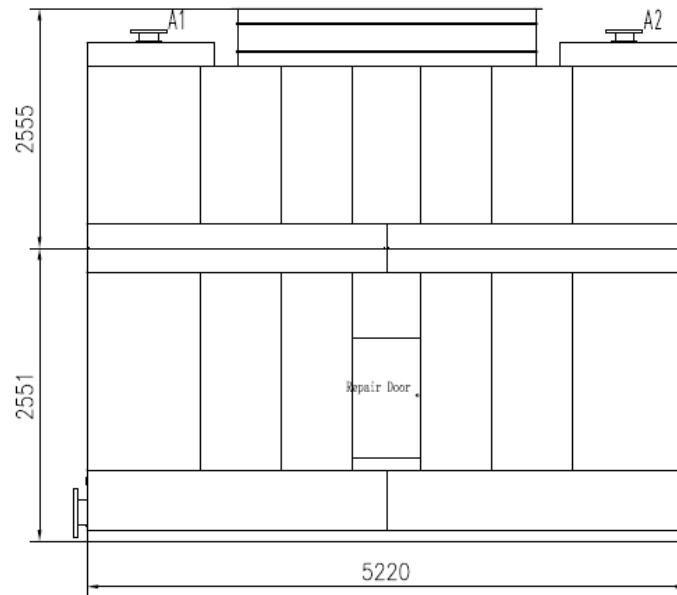
5) Model FKHL-852(D、P、G)



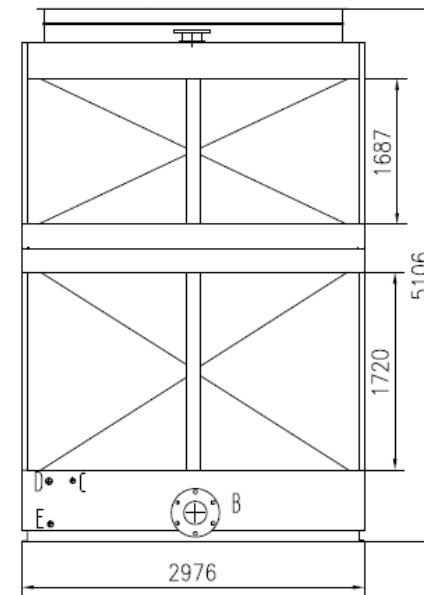
pipe table				
Symbol	Size	standard	seal type	used for
A1	DN150	HG20593,20599	RF	Inlet water
A2	DN150	HG20593,20599	RF	Inlet water
B	DN250	HG20593,20599	RF	Out water
C	DN25	G1'(G pipe thread)	G pipe	water pick up
D	DN50	G2'(G pipe thread)	G pipe	over flow
E	DN50	G2'(G pipe thread)	G pipe	sewage



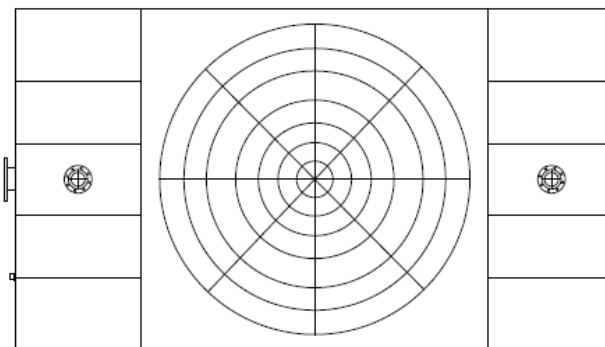
6) Model FKHL-854(D、P、G)



VIEW 2



VIEW 1

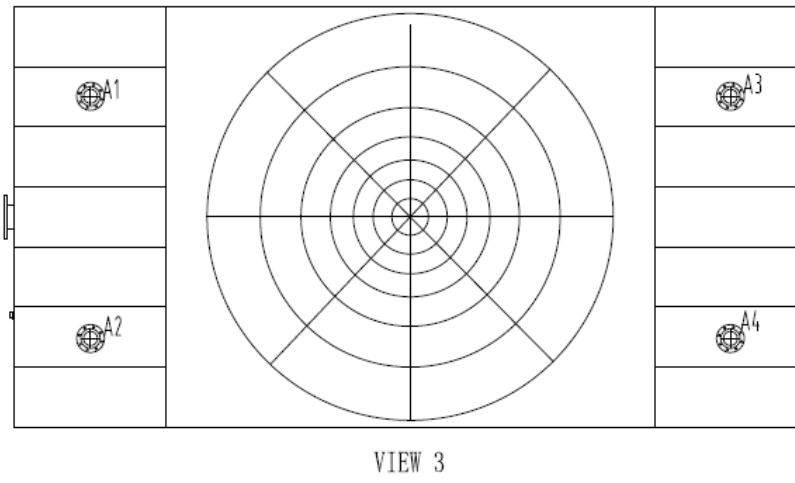
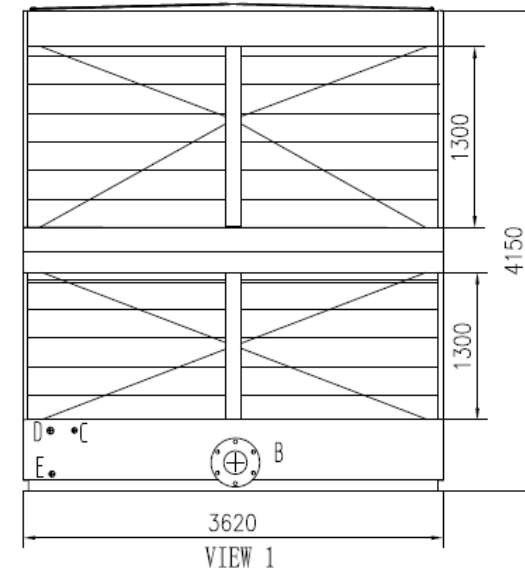
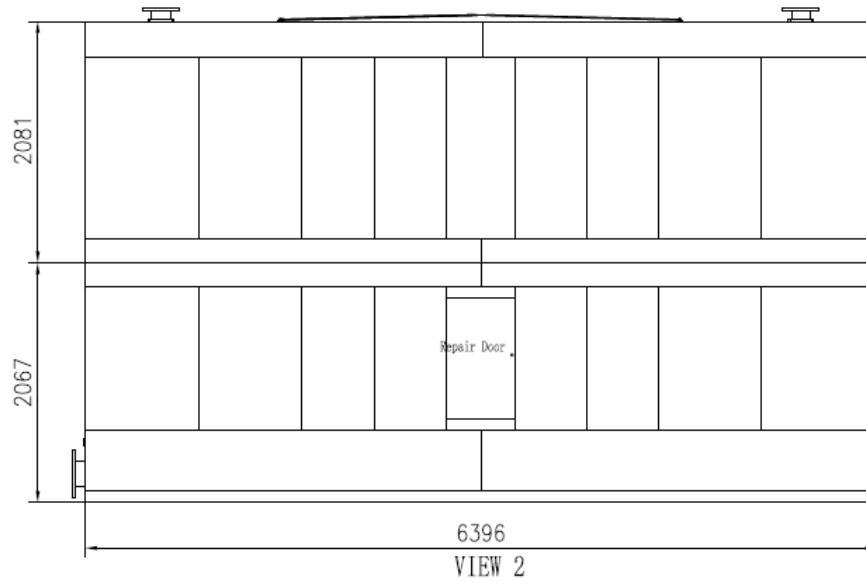


VIEW 3

pipe table				
Symbol	Size	standard	seal type	used for
A1	DN150	HG20593,20599	RF	Inlet water
A2	DN150	HG20593,20599	RF	Inlet water
B	DN250	HG20593,20599	RF	Out water
C	DN25	G1'(G pipe thread)	G pipe	water pick up
D	DN50	G2'(G pipe thread)	G pipe	over flow
E	DN50	G2'(G pipe thread)	G pipe	sewage



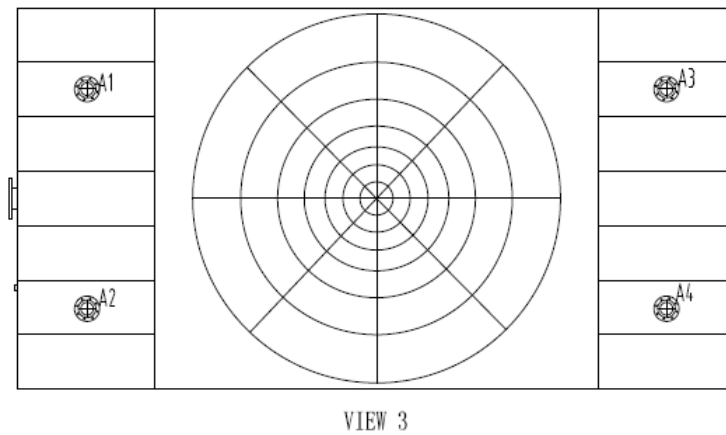
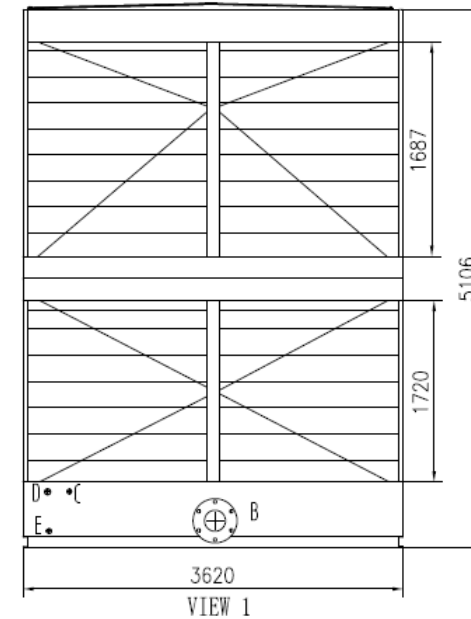
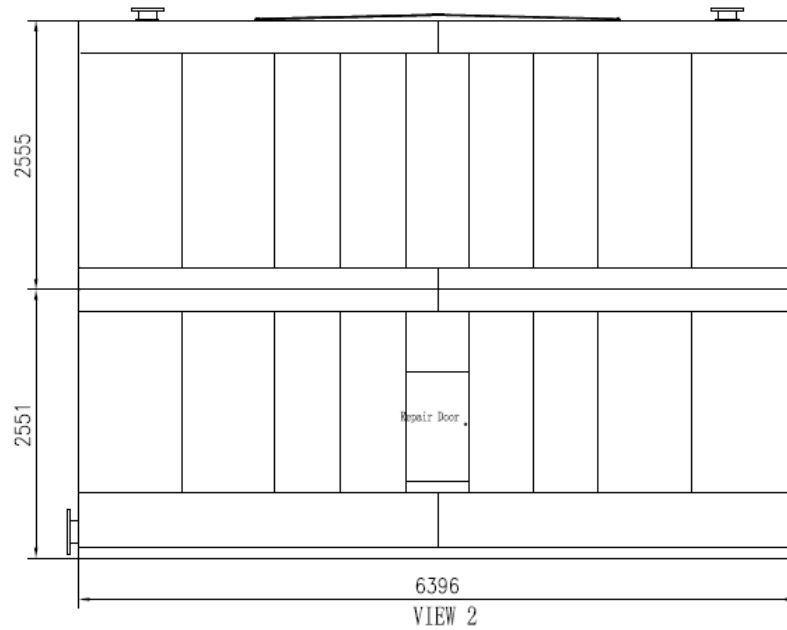
7) Model FKHL-873(D、P、S、U、L、G)



pipe table				
Symbol	Size	standard	seal type	used for
A1, A2	DN125	HG20593,20599	RF	Inlet water
A3, A4	DN125	HG20593,20599	RF	Inlet water
B	DN250	HG20593,20599	RF	Out water
C	DN25	G1'(G pipe thread)	G pipe	water pick up
D	DN50	G2'(G pipe thread)	G pipe	over flow
E	DN50	G2'(G pipe thread)	G pipe	sewage



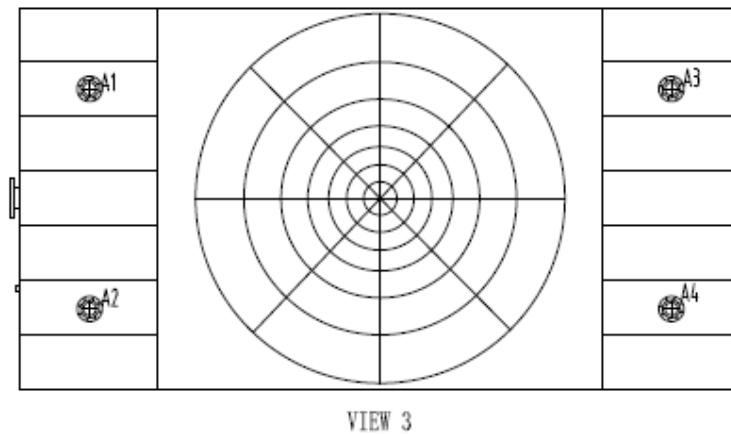
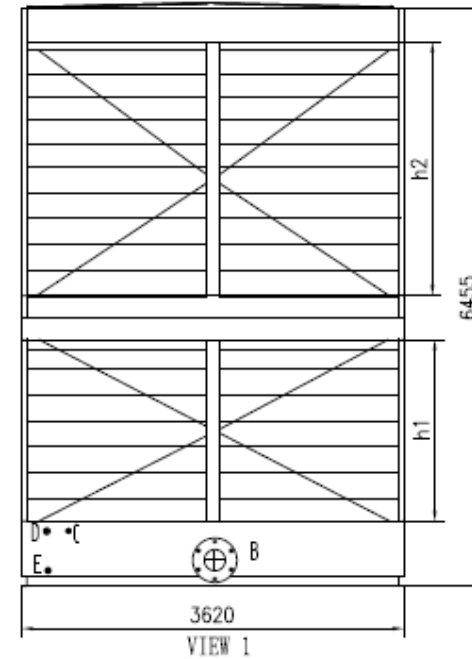
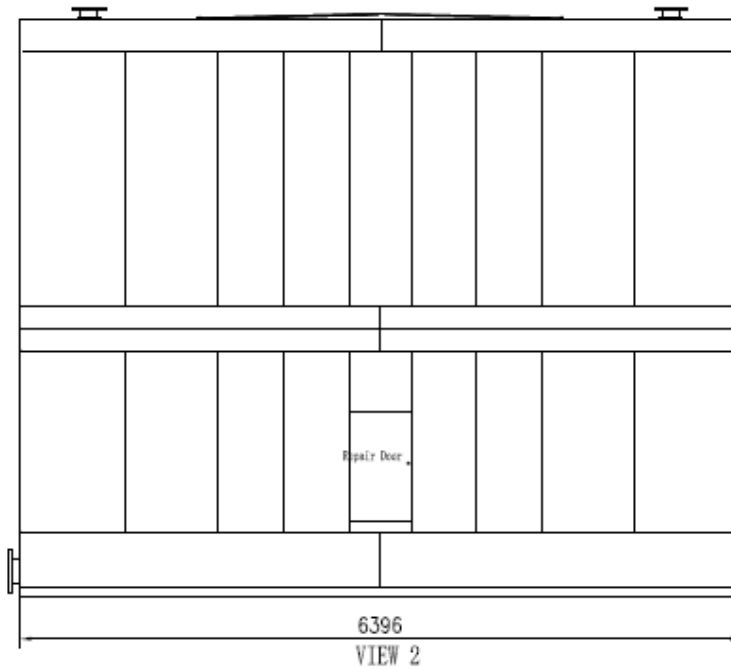
8) Model FKHL-874(P、U、L、G)



pipe table				
Symbol	Size	standard	seal type	used for
A1、A2	DN125	HG20593,20599	RF	Inlet water
A3、A4	DN125	HG20593,20599	RF	Inlet water
B	DN300	HG20593,20599	RF	Out water
C	DN25	G1"(G pipe thread)	G pipe	water pick up
D	DN50	G2"(G pipe thread)	G pipe	over flow
E	DN50	G2"(G pipe thread)	G pipe	sewage



9) Model FKHL-875(P、U、L、G)



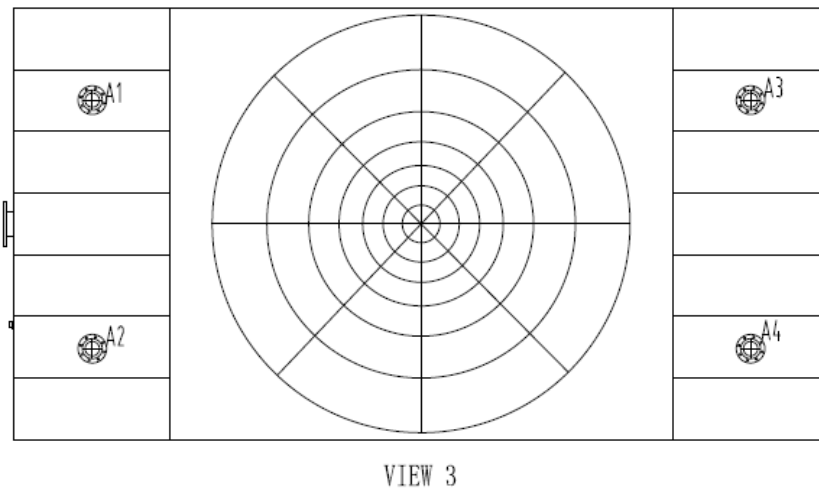
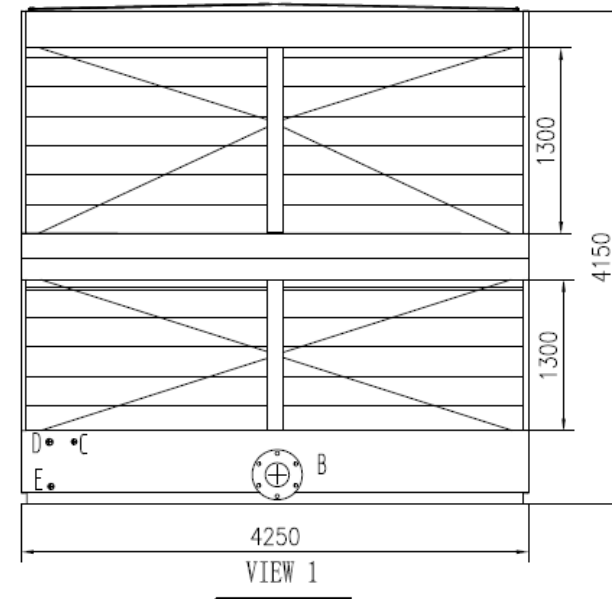
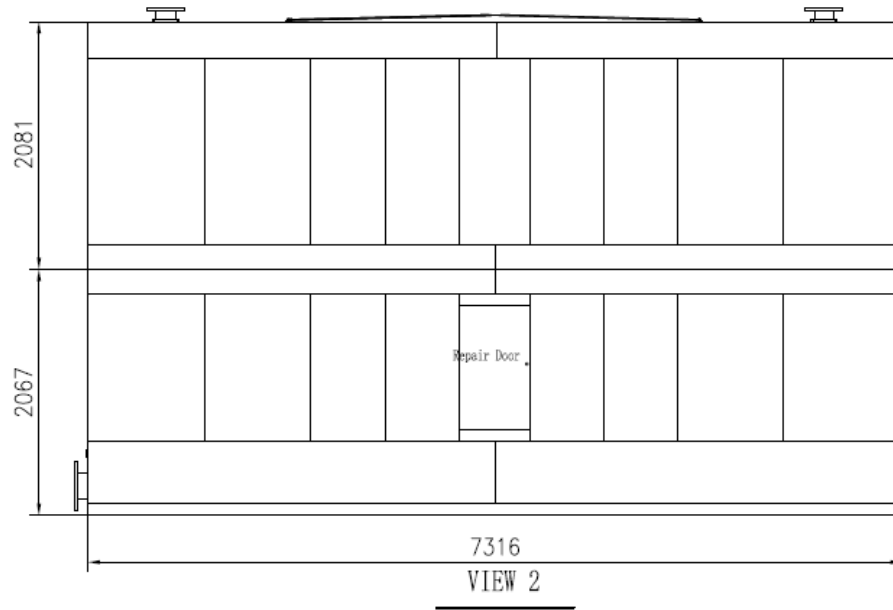
Pipe table

Symbol	Size	Connction Dimension and Standard	Seal Type	Used for
A1. A2	DN150	HG20593, 20599	RF	Inlet water
A3. A4	DN150	HG20593, 20599	RF	Inlet water
B	DN300	HG20593, 20599	RF	Outlet water
C	DN25	G1"IG pipe thread	G pipe thread	Water make up
D	DN50	G2"IG pipe thread	G pipe thread	Over flow
E	DN50	G2"IG pipe thread	G pipe thread	Sewage

Remark : h1+h2=4940



10) Model FKHL-893(D、P、S、U、L、G)



pipe table				
Symbol	Size	standard	seal type	used for
A1、A2	DN125	HG20593,20599	RF	Inlet water
A3、A4	DN125	HG20593,20599	RF	Inlet water
B	DN250	HG20593,20599	RF	Out water
C	DN25	G1'(G pipe thread)	G pipe	water pick up
D	DN50	G2'(G pipe thread)	G pipe	over flow
E	DN50	G2'(G pipe thread)	G pipe	sewage

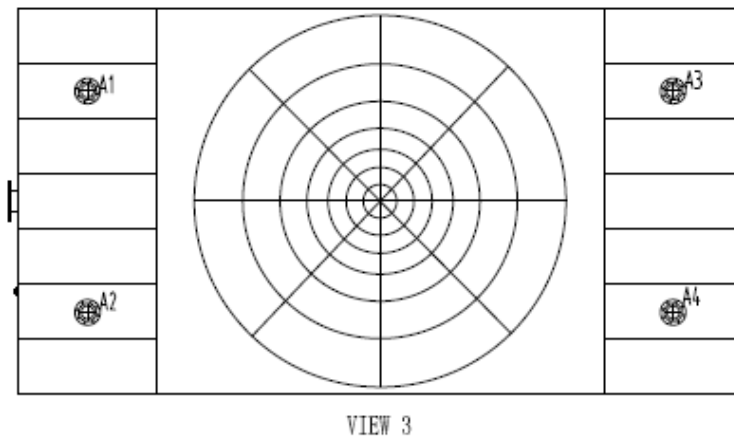
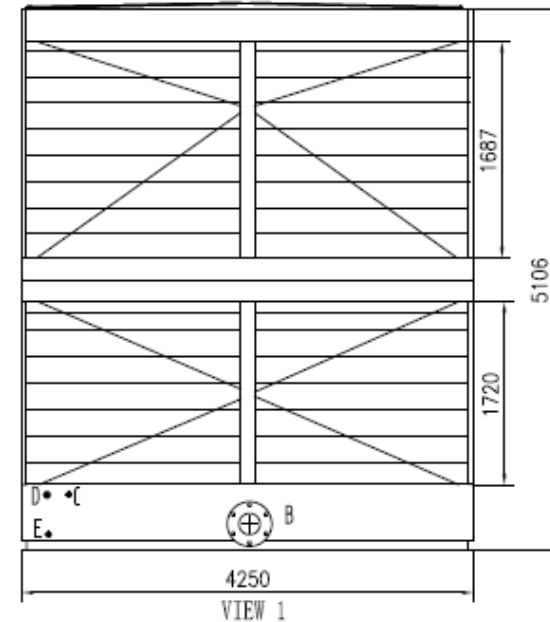
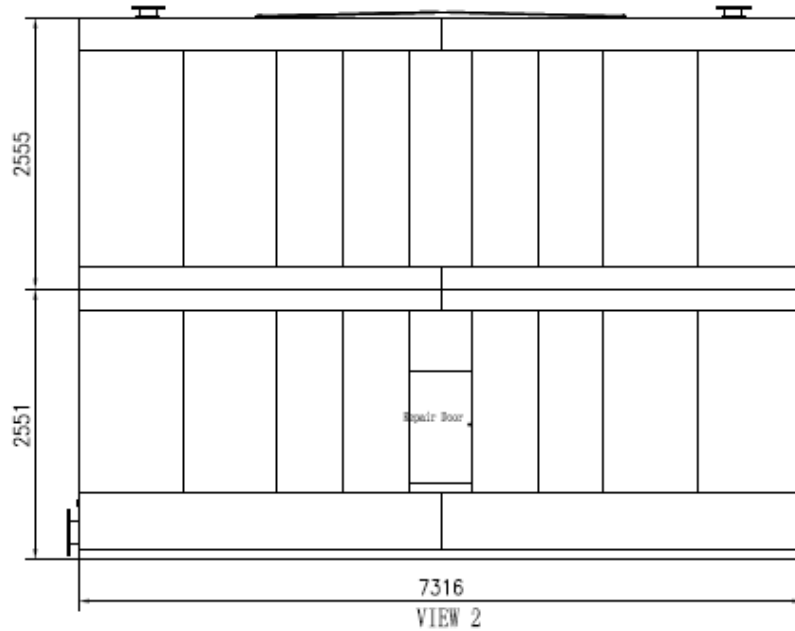
remark :

FKHL-893(D、P) B=DN250

FKHL-893(S、U、L、G) B=DN300



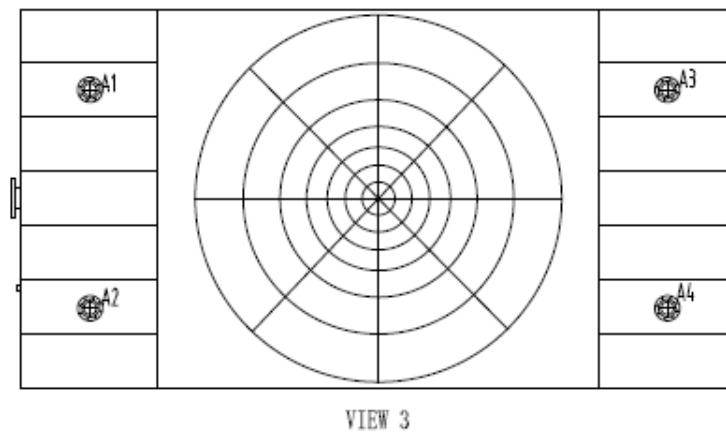
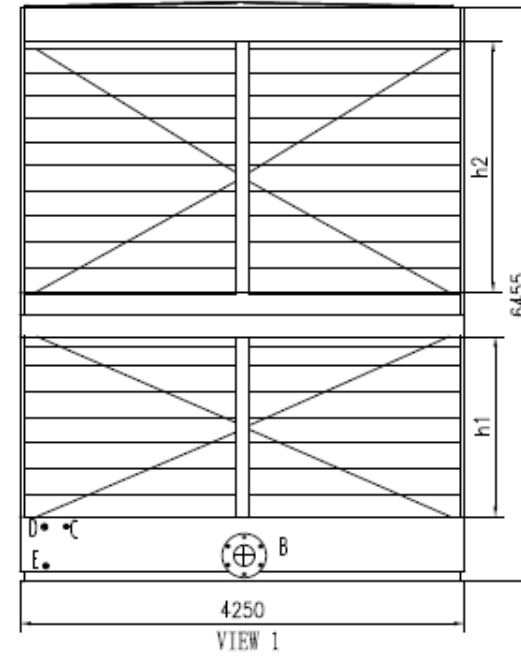
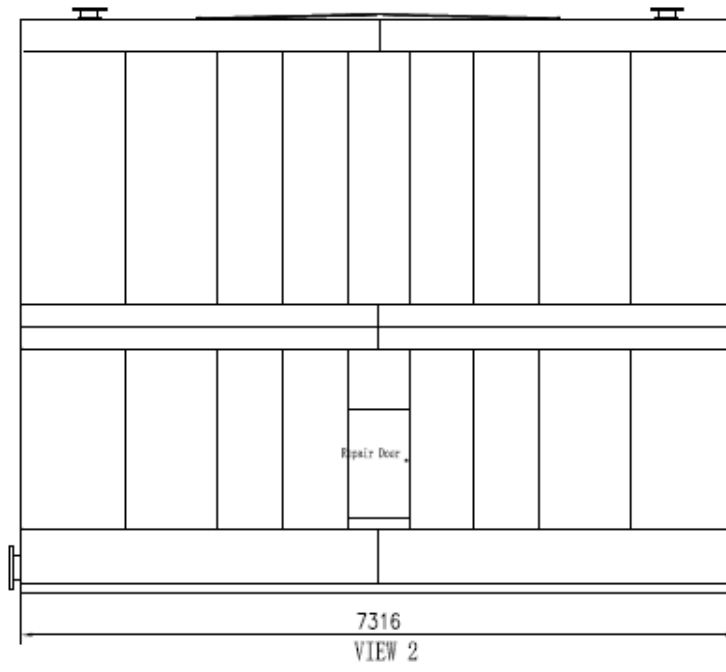
11) Model FKHL-894(P、U、L、G)



pipe table					
Symbol	Size	standard	seal type	used for	
A1, A2	DN150	HG20593,20599	RF	Inlet water	
A3, A4	DN150	HG20593,20599	RF	Inlet water	
B	DN350	HG20593,20599	RF	Out water	
C	DN25	G1(G pipe thread)	G pipe	water pick up	
D	DN50	G2(G pipe thread)	G pipe	over flow	
E	DN50	G2(G pipe thread)	G pipe	sewage	



12) Model FKHL-895(P、U、L、G)



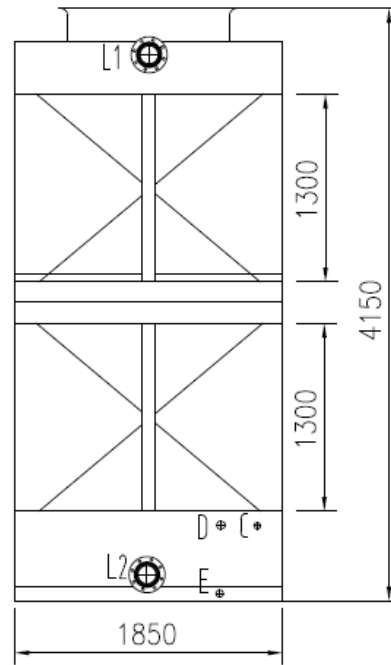
pipe table					
Symbol	Size	standard	seal type	used for	
A1、A2	DN200	HG20593,20599	RF	Inlet water	
A3、A4	DN200	HG20593,20599	RF	Inlet water	
B	DN400	HG20593,20599	RF	Out water	
C	DN25	G1"G pipe thread	G pipe	water pick up	
D	DN50	G2"G pipe thread	G pipe	over flow	
E	DN50	G2"G pipe thread	G pipe	sewage	

Remark :  $h1+h2=4940$

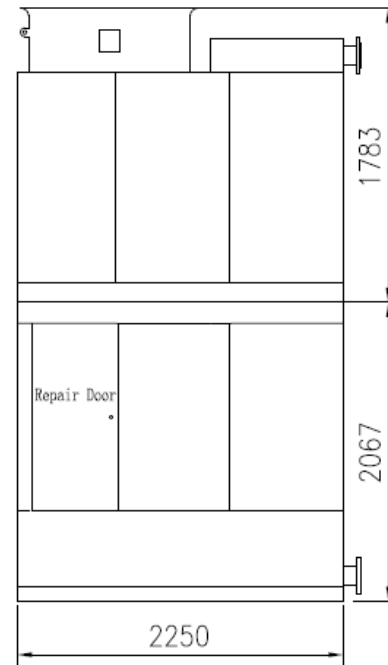




13) Model FKH-713(D、P、G)

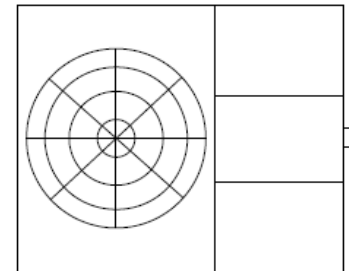


VIEW 2



VIEW 1

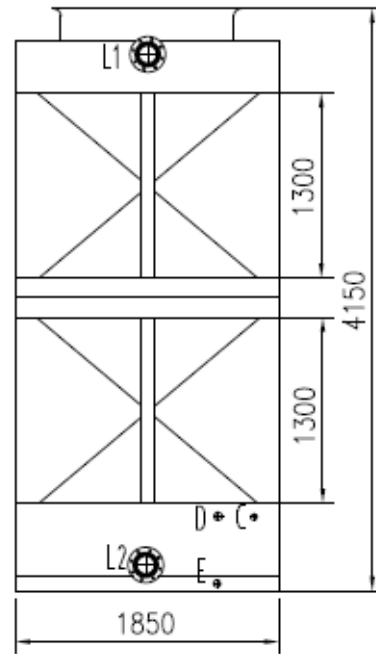
pipe table				
Symbol	Size	standard	seal type	used for
L1	DN100	HG20593,20599	RF	Inlet water
L2	DN100	HG20593,20599	RF	Out water
C	DN25	G1'(G pipe thread)	G pipe	water pick up
D	DN50	G2'(G pipe thread)	G pipe	over flow
E	DN50	G2'(G pipe thread)	G pipe	sewage



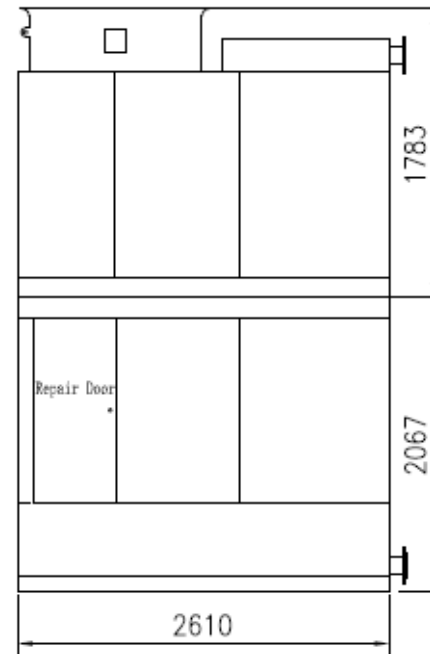
VIEW 3



14) Model FKH-723(D、P、G)

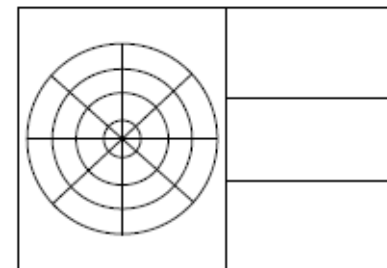


VIEW 2



VIEW 1

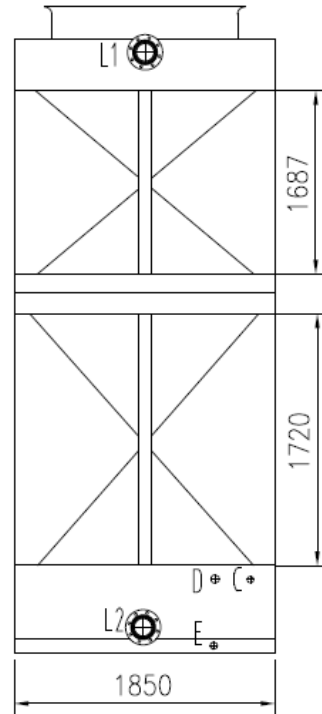
pipe table				
Symbol	Size	standard	seal type	used for
L1	DN125	HG20593,20599	RF	Inlet water
L2	DN125	HG20593,20599	RF	Out water
C	DN25	G1'(G pipe thread)	G pipe	water pick up
D	DN50	G2'(G pipe thread)	G pipe	over flow
E	DN50	G2'(G pipe thread)	G pipe	sewage



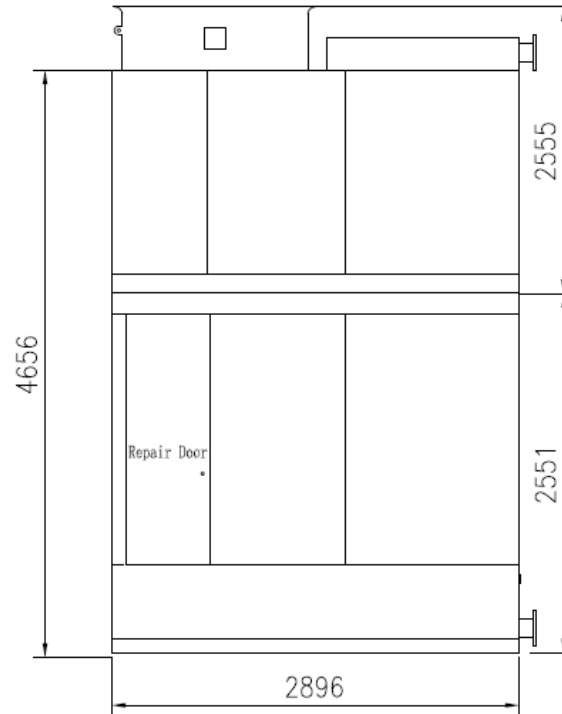
VIEW 3



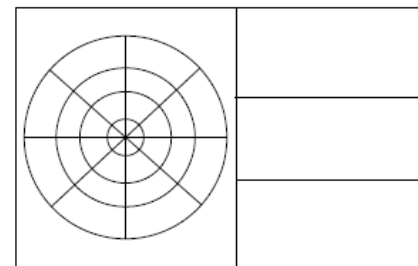
15) Model FKH-734(D、P、G)



VIEW 2



VIEW 1

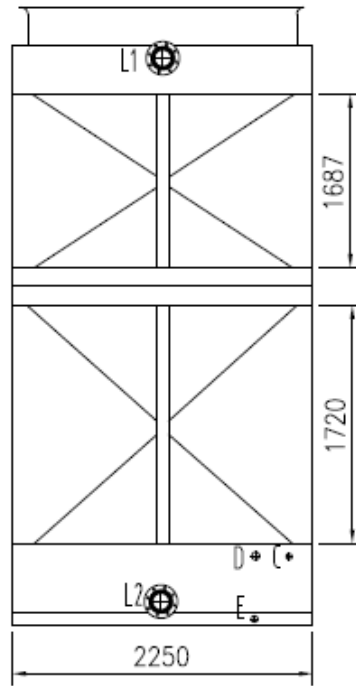


VIEW 3

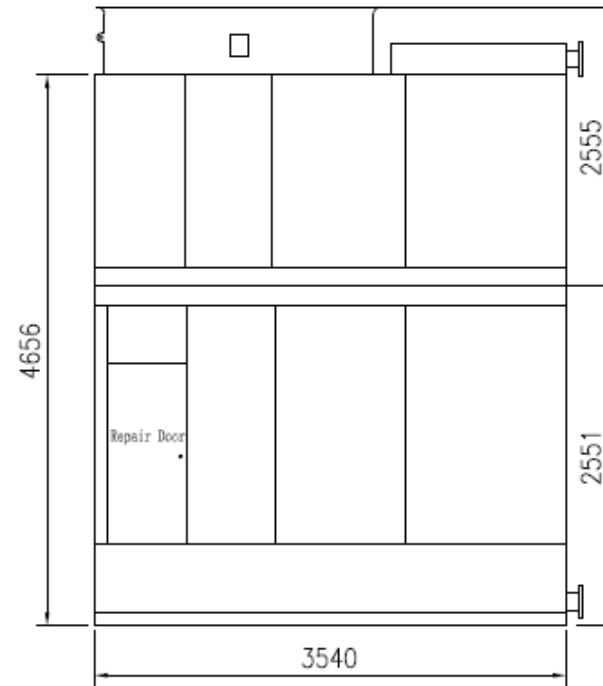
pipe table				
Symbol	Size	standard	seal type	used for
L1	DN150	HG20593,20599	RF	Inlet water
L2	DN150	HG20593,20599	RF	Out water
C	DN25	G1'(G pipe thread)	G pipe	water pick up
D	DN50	G2'(G pipe thread)	G pipe	over flow
E	DN50	G2'(G pipe thread)	G pipe	sewage



16) Model FKH-744(D、P、G)

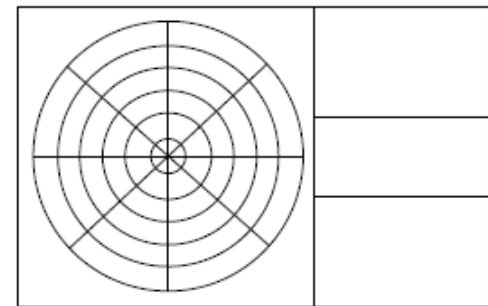


VIEW 2



VIEW 1

pipe table				
Symbol	Size	standard	seal type	used for
L1	DN200	HG20593,20599	RF	Inlet water
L2	DN200	HG20593,20599	RF	Out water
C	DN25	G1'(G pipe thread)	G pipe	water pick up
D	DN50	G2'(G pipe thread)	G pipe	over flow
E	DN50	G2'(G pipe thread)	G pipe	sewage



VIEW 3